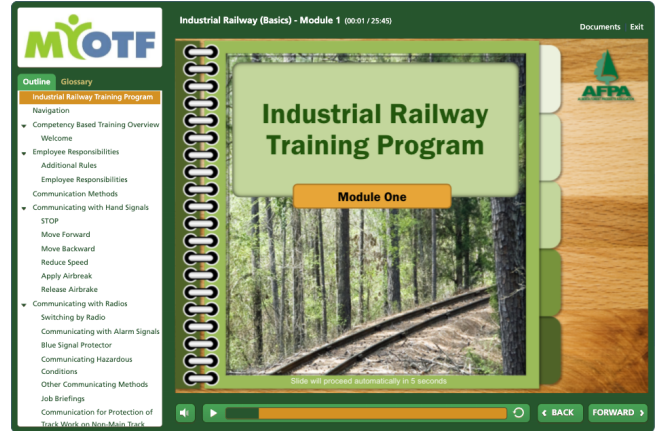


About this Course

Every person working on or around rail cars, track and engines is required to have a general understanding of the Industrial Railway regulations and any company specific rules and instructions specific to their job.

This course is intended to provide the trainee with the fundamentals when working for an Industrial Railway in an interactive online learning environment that can be accessed from any Internet-connected computer.

The average student requires approximately 60 minutes to complete this training and is awarded with a downloadable and printable certificate of completion.



Course Outline

Module 1

Employee Responsibilities

Communication Methods

- Communicating with Hand Signals
- Communicating with Radios

Operation of Movements

Switches

Derails

Module One Wrap Up

Module 2

Securing Equipment

- Hand Brakes
- Air Brake Schematic
- Coupling/Uncoupling Equipment
- Shoving Equipment

Freight Car Inspection

Core Rail Safety Rules

3 Point Contact

Mastery Quiz (90% to pass)

Verification Techniques Employed

- ✓ **Identity:** Unique usernames and passwords.
- ✓ **Security:** Bank-level encryption.
- ✓ **Certificate Verification:** Certificates contain a verification code that can be checked on MyOTF.com.